



MONTHLY MEMBERSHIP PROGRESS REPORT

Results as of: 1/31/2016

Multiple District 44

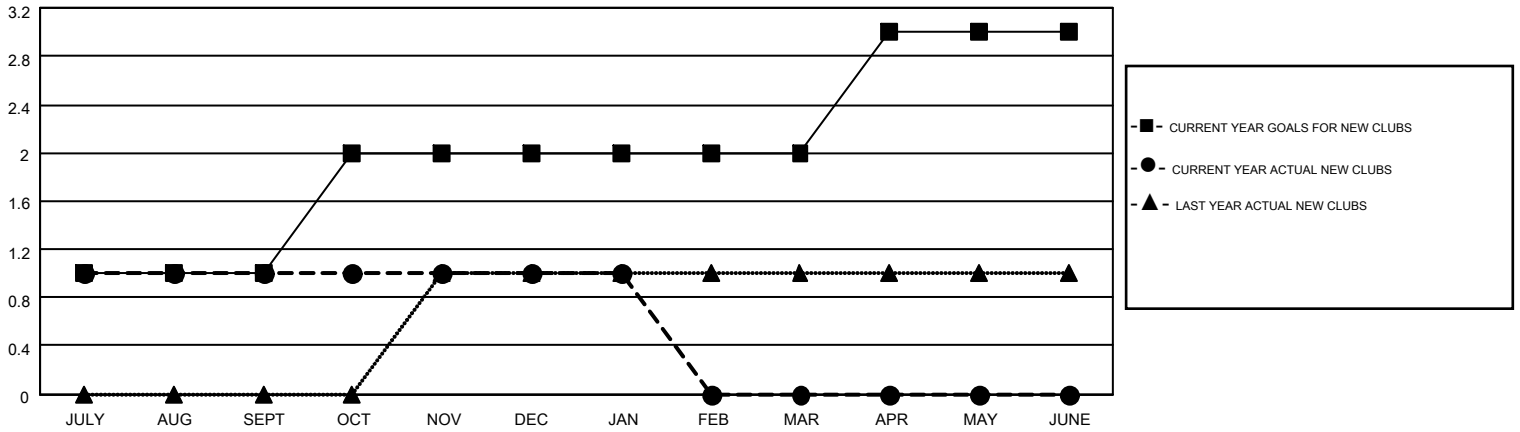
LOCATION: NEW HAMPSHIRE

GMT: ED LECIUS

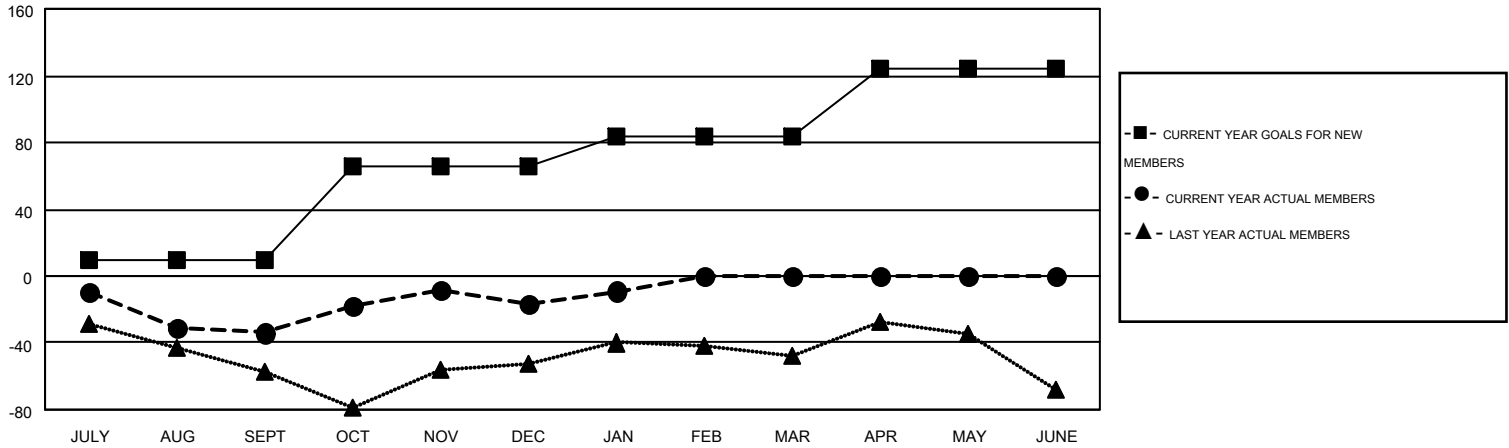
GMT CA 1

| Clubs | | | | | Members | | | | |
|-----------------------|---------------|-----------|---------------|---------------|-----------------------|-----------------|-------------------------------|-----------------|---------------|
| RESULTS FOR 2015-2016 | | | | | RESULTS FOR 2015-2016 | | | | |
| QUARTER | NEW CLUB GOAL | NEW CLUBS | DROPPED CLUBS | NET GAIN/LOSS | QUARTER | NEW MEMBER GOAL | CHARTER AND NEW MEMBERS ADDED | DROPPED MEMBERS | NET GAIN/LOSS |
| JULY/AUG/SEPT | 1 | 1 | 0 | 1 | JULY/AUG/SEPT | 10 | 70 | 104 | -34 |
| OCT/NOV/DEC | 1 | 0 | 2 | -2 | OCT/NOV/DEC | 56 | 82 | 65 | 17 |
| JAN/FEB/MAR | 0 | 0 | 0 | 0 | JAN/FEB/MAR | 18 | 27 | 19 | 8 |
| APR/MAY/JUNE | 1 | 0 | 0 | 0 | APR/MAY/JUNE | 40 | 0 | 0 | 0 |

GOALS AND ACTUAL NEW CLUBS CUMULATIVE



GOALS AND ACTUAL MEMBERS CUMULATIVE



| | | | |
|------------------------|--|----------------------------------|----------------|
| DROPPED CLUBS: 2 | 40 CLUBS OF 80 ADDED 1 OR MORE NEW MEMBERS | <u>GENDER DISTRIBUTION</u> | |
| <u>DROPPED MEMBERS</u> | | MALE | 1,424 (62.32%) |
| DECEASED | 14 | FEMALE | 861 (37.68%) |
| CLUB CANCELLED | 14 | <u>FAMILY UNIT MEMBERS</u> 615 | |
| OTHER | 160 | <u>HEAD OF HOUSEHOLD</u> 302 | |
| TOTAL | 188 | <u>NON-HEAD OF HOUSEHOLD</u> 313 | |

[CLICK HERE FOR HEALTH ASSESSMENT DATA](#)